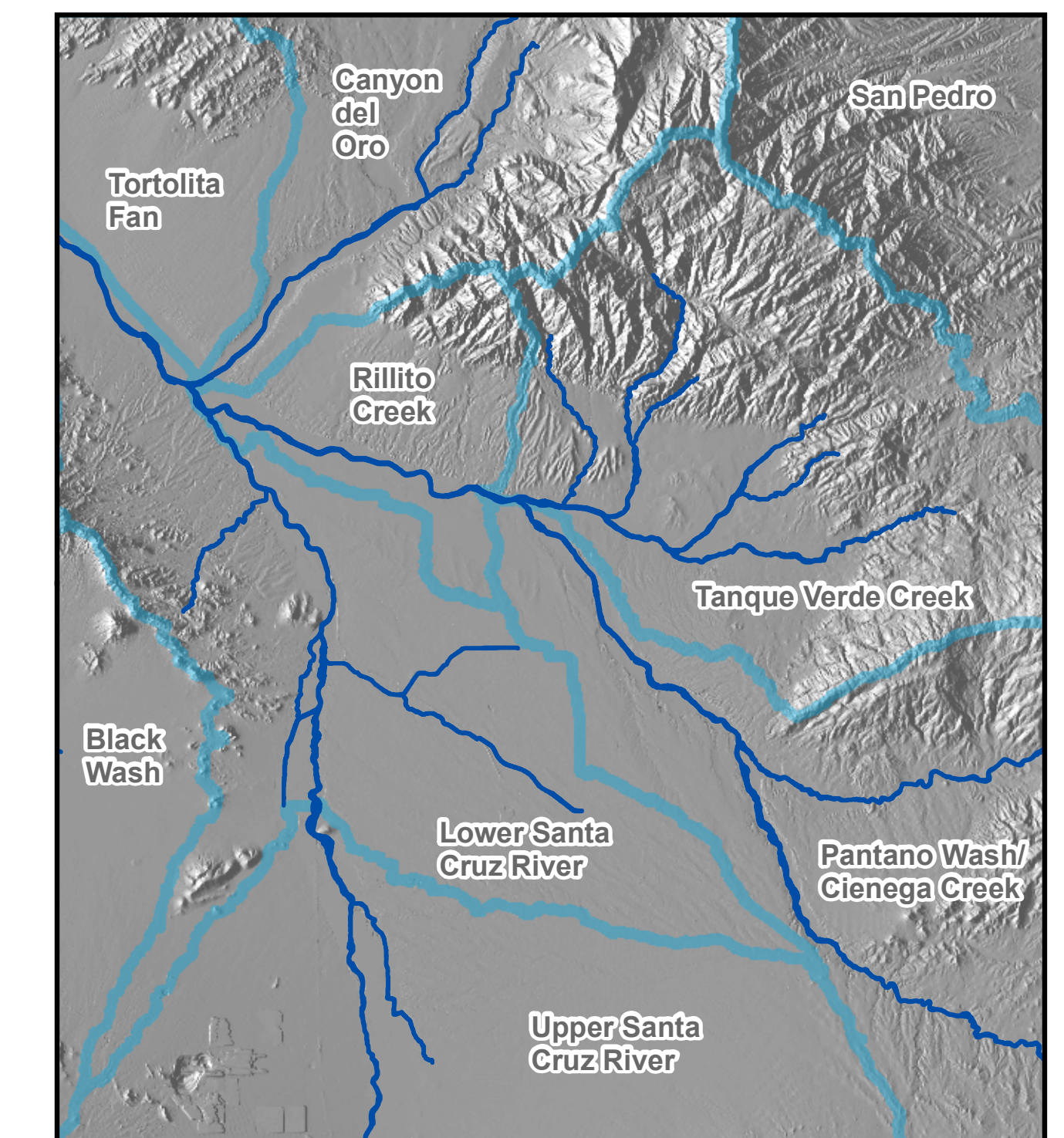


### Named Tucson Basin Watersheds

- |                           |                                  |                                  |
|---------------------------|----------------------------------|----------------------------------|
| 1. 18th Street Wash       | 27. Finger Rock Wash             | 53. Roger Wash                   |
| 2. A Mtn Detention        | 28. First Avenue Wash            | 54. Roller Coaster Wash          |
| 3. Agua Caliente          | 29. Fletcha Caida Wash           | 55. Rolling Hills Wash           |
| 4. Airport Wash           | 30. Flowing Wells Wash           | 56. Rose Hill Wash               |
| 5. Alamo Wash             | 31. Fortyniners Wash             | 57. Ruthrauff Wash               |
| 6. Alvernon Wash          | 32. Friendly Village Wash        | 58. Sabino Creek                 |
| 7. Atterbury Wash         | 33. Grant Road Wash              | 59. Santa Clara Wash             |
| 8. Bronx Wash             | 34. Guillermo Wash               | 60. Silvercroft Wash             |
| 9. Camino de Oeste Wash   | 35. Hidden Hills Wash            | 61. Spanish Trail Wash           |
| 10. Camino Real Wash      | 36. Hughes Wash                  | 62. Stone Avenue Wash            |
| 11. Campbell Wash         | 37. Idle Hour Wash               | 63. Swan Road Wash               |
| 12. Casas Adobes Wash     | 38. Irvington (Michigan) Wash    | 64. Sweetwater Wash              |
| 13. Christmas Wash        | 39. Julian Wash                  | 65. Tucson General Wash          |
| 14. Christopher City Wash | 40. Kreuger Wash                 | 66. Tucson Arroyo                |
| 15. Civano Wash           | 41. Los Reales Diversion Channel | 67. Tucson General Wash          |
| 16. Craycroft Wash        | 42. Mesquite Ranch Wash          | 68. Udall Park Wash              |
| 17. Creekside Wash        | 43. Mission View Wash            | 69. Valencia Wash                |
| 18. Cushing Street Wash   | 44. Nanini Wash                  | 70. Valley View Wash             |
| 19. Del Cerro Wash        | 45. North Mountain Ave. Wash     | 71. Ventana Canyon Wash          |
| 20. Downtown Watershed    | 46. Owen Park Wash               | 72. Villa Entrada Wash           |
| 21. Earp Wash             | 47. Piegler Wash                 | 73. WBSGR Diversion Channel      |
| 22. Eastview Wash         | 48. Pima Wash                    | 74. West Branch Santa Cruz River |
| 23. El Vado Wash          | 49. Race Track Wash              | 75. West University Wash         |
| 24. Escalante Wash        | 50. Reyes Wash                   | 76. Wetmore Wash                 |
| 25. Este Wash             | 51. Robb Wash                    | 77. Wrightstown Wash             |
| 26. Fahringer Wash        | 52. Rodeo Wash                   | 78. Wyoming Wash                 |

### Pima County Watersheds



### Arizona Watersheds



TerraSystems Southwest and the Watershed Management Group, Inc. would like to thank Pima County Department of Transportation Geographic Information Services Division and the City of Tucson Department of Transportation for graciously providing the datasets displayed on this map. The Hydrologic Unit Code (HUC) data, aggregated to subregions, was provided by the USDA-NRCS National Cartography and Geospatial Center. All data is accepted as-is, with all known and unknown inaccuracies and/or errors, and without warranty of any kind.



Major Streets

Named Washes

Major Watersheds

Map Date: March 23, 2009

